



Big Tim's Big Day Out

Contents

When what how why.....	2
Registration	2
Car Parking	3
Baggage area	4
Riders Code of Conduct	4
In the Event of an Accident	4
Assistance during the Ride	4
Route Signage.....	5
Litter	6
What to bring?	6
What to wear?.....	6
Break downs	6
Feed station.....	6
Toilets.....	7
What Happens at the Finish?.....	7
Photography	7
Event Website	7
General Queries	7
How to get there	8
Our Partners	9



Big Tim's Big Day Out

When what how why

- Date Sunday 2nd September 2018
- Distances Grande 90 km / Cortado 50 km / Espresso 15 km
- Ascent Grande Route 1044 metres / Cortado Route 712 metres / Espresso 194 metres
- Registration opens 08:00
- **Start Time 09:00 (10.30 for Espresso)**
- Start/Finish South of England Showground Selsfield Road Ardingly RH17 6TH

Registration

Registration is at the Young Farmers shed within the Showground - **open at 8.00am**. At registration you will be given:

- **Bike/Rider Number, zip ties & Timing Chip** - You will be issued with a number board which must be secured to the handlebars of your bike with the cable ties. This provides you with access to the feed stations and entitlement to the event support
- **Helpline card** – this gives you emergency contact details if you need to contact the organiser while out on the ride – **HELPLINE NUMBER – 07593 099680**
- **Timing Chip** - Your timing chip will be stuck on the back of the number board, so please ensure your number is attached to the front of your handlebars, otherwise you may not get an officially recorded time. Please don't bend it – it may damage the chip

Thread zip ties through punch hole at rear of board and loop back to tie round bars



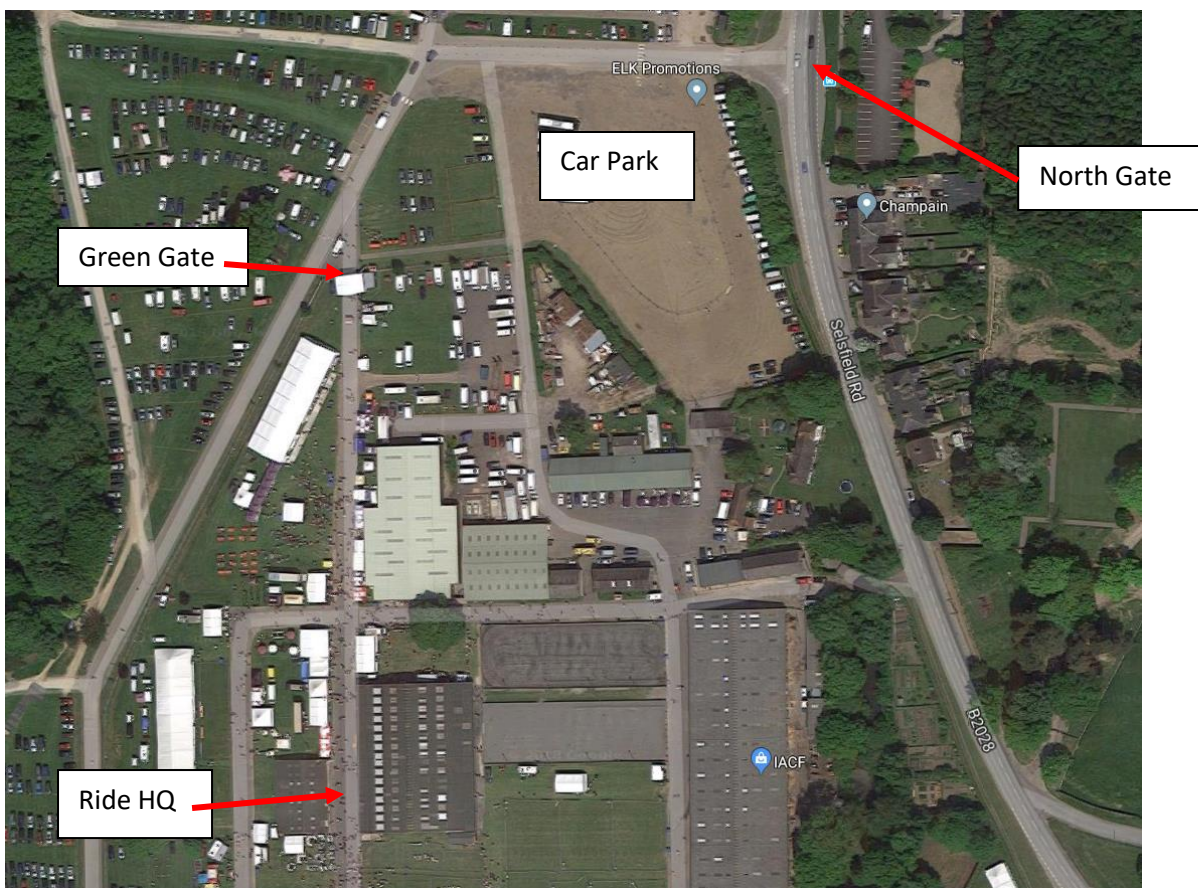
- **Under 16's** please contact the event organiser for a parental consent form



Big Tim's Big Day Out

Car Parking / Showground Entrance

Parking is available at the North Gate entrance (opposite the Gardeners Arms pub). Drive in and immediately to your left is the car park. Enter the Showground through the Green Gate, and the ride HQ is about 200 metres straight ahead.





Big Tim's Big Day Out

Baggage area

There will be a bag drop at the start area. Someone should be there all of the time, but we cannot be held responsible for any loss or damage. Any belongings left in cars should be left out of sight

Riders Code of Conduct

Big Tim's Big Day Out takes place on public roads, so you need to follow Highway Code regulations just as you would on a regular ride. Please ensure you pay particular attention at major road junctions & crossings. You should familiarise yourself with the route as much as possible before the event.

Please take extra precautions when in the vicinity of other road users, be especially aware of horses and their riders and ride with care through larger villages and towns.

The British Horse Society has a Code of Conduct for Horse Riders & Cyclists – access it here for some very relevant information: <http://goo.gl/CyfKhT>

In the Event of an Accident

If you are involved in a serious accident requiring immediate medical attention, **ring 112 from your mobile (this gives a GPS location)**, then the **helpline number**

Assistance during the Ride

Should you require assistance please phone the **helpline number**. If you decide to drop out of the ride for any reason, please let us know by calling the **helpline** so we can account for you and make arrangements for your return.



Big Tim's Big Day Out

Route Signage

The routes will be signed, with **ORANGE** and **BLACK** direction signs. Please be careful on narrow sections of road and descents, keeping a safe distance between yourself and the rider in front, especially if it's wet

REMEMBER – NO SIGN – NO TURN

CAUTION

(Distances relate to the Grande route)

- Crossing the A22 at 26km.
- Crossing the A272 at 32.4km.
- Crossing the A26 at 39.6km
- Short stretch on the A26 at 48.7km. Can be fast traffic here.
- 3kms along the A272 Chailey to Scaynes Hill – traffic can be fast here, be aware
- At 89kms – Cob Lane – steep and uphill.



Big Tim's Big Day Out

Litter

There will be litter bins at the event HQ and at the feed station. Please use them and don't drop any litter en route - it gives us cyclists a bad name!

What to bring?

Although the event will be supported by feed stations en route, and a sweep vehicle, we recommend that you bring:

- a multi tool
- two spare tubes
- tyre levers
- a working pump
- adequate hydration and food
- a mobile phone
- a small amount of cash in case of emergencies

What to wear?

We insist that all riders wear a helmet during the event, in order to comply with insurance requirements.

NO HELMET, NO RIDE.

Weather is changeable, especially when moving in and around Sussex! Have a look at the [Met Office Website](#) for the forecast. Be prepared, bring extra gear with you in case conditions change from leaving home

Break downs

There will be a sweep vehicle trailing the back markers. Call the helpline if you are in trouble and we will endeavour to either get you back on the road or back to HQ

Feed station

The route split at Splaynes Green (29.7km) will have a water station, and there will be a feed station at Chailey School at 63.2km on the Grande route. Look out for the feed station flag. The team at Chailey School have very kindly allowed us to use their facilities for free, so please respect the environment if you do stop there. Energy supplements from Madison, and water will be provided.



Big Tim's Big Day Out

Toilets / Showers

There are Toilets at the start area, as well as limited shower facilities. Please use Public Toilets on the route, rather than natural surroundings, as doing so may put the future of the event in jeopardy. There are toilets at the feed station.

What Happens at the Finish?

The finish line is the same as the start line. **TAKE EXTRA CARE ENTERING THE GROUNDS, AS VEHICLES MAY BE LEAVING.**

Your finish time will be recorded as you cross the line. Please leave the area as clear as possible for riders finishing behind you. Times will be available at the ticket printer at the finish and will also be posted via the link on the event website.

Photography

Phil O'Connor will be taking pictures at the event HQ and out and about

Event Website

bigtimsbigdayout.com

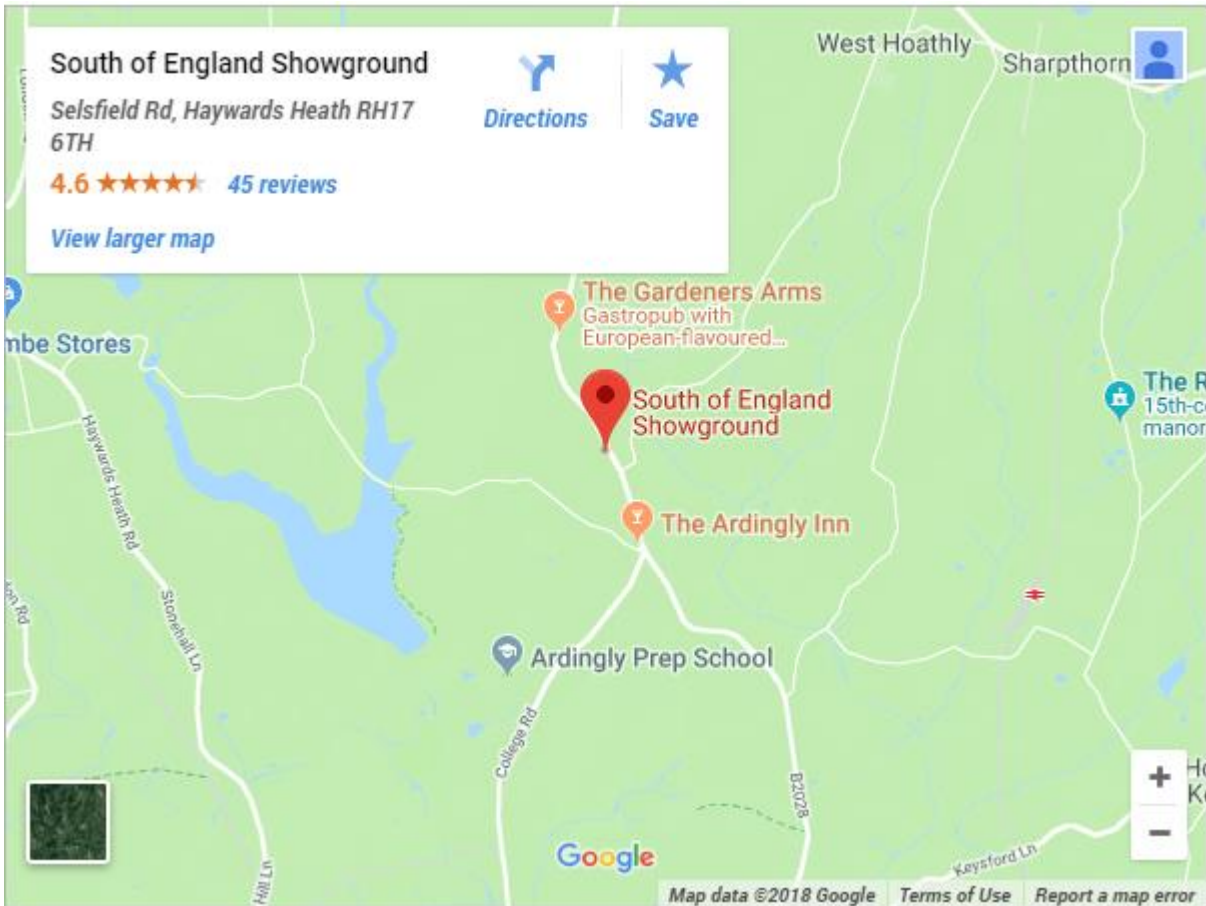
General Queries

Email: info@velopace.com



Big Tim's Big Day Out

How to get there



The Start/Finish and Registration are all located at The South of England Showground, Selsfield Road Ardingly RH17 6TH

- **Road** - From central London get on the M25, then either M23/A23 signed to Brighton, then A272 Haywards Heath then follow signs to South of England Showground
- **Rail** - The nearest train station is Haywards Heath (info at [National Rail Enquiries](#) or telephone 08457 48 49). From there either Taxi or ride to the start



Big Tim's Big Day Out

Big Tim's Big Day Out Partners

With grateful thanks to the following who have all contributed to make the day possible:

Jenni Stevens and family, Steve Sefton, Sean Yates, Chailey School, In Gear Cycle, Shaw Harley-Davidson, Paul Watson (Kermis Beer), Summit Finish, Train Sharp, Velo Culture